

Candlelighters

Supporting the families of children with cancer



**Business
partnership
pack**

Whether you're just starting your journey or already part of our community, we're thrilled to show how your support can change lives.

A partnership with Candlelighters does more than raise vital funds; it brings comfort, hope and support to children and families facing childhood cancer.

We believe in true partnership. We work closely with teams, every step of the way, to turn your support into real, life-changing impact.

This pack is full of ideas, tips and inspiration to get you started. Whether you're organising a charity of the year partnership, hosting fundraising events in the office, getting a team together for a sponsored challenge, or thinking up something completely different – we're here to help make it a success.

Thank you again for being amazing. We simply couldn't do what we do without incredible support from fundraisers like you.



Emily

Emily Wragg
Candlelighters CEO

Candlelighters supports over 1,000 people each year across Yorkshire, providing emotional, practical and financial help for families facing childhood cancer. With around 150 children diagnosed every year, and treatment often lasting several years, we're here for families for as long as they need us.



“At Gazelle, we are delighted and humbled to play a small part in helping such a worthwhile cause. As a business we are made up mostly of parents and can only imagine what those having to use the charity are going through. To have such support at an extremely difficult time from an organisation like Candlelighters is priceless. We are extremely happy to pledge our continued support to helping the charity and in some small way, the families of the wonderful children that this amazing charity helps.”

Gazelle Risk Solutions



info@candlelighters.org.uk
0113 887 8333

Harper's story, shared by mum Abi...



“We spent five months not knowing what was wrong with Harper, endless tests and procedures with no answers. The moment we got the diagnosis was the moment our lives changed forever...”

Aged three, Harper was diagnosed with a rare and aggressive tumour, and we found out she would need chemotherapy every week for the next six months, which was just the start of our journey. Things move so quickly and you get thrown into a world that you're not prepared for.

Candlelighters have been there every single step of the way. From the moment we were told Harper's diagnosis, they were waiting with open arms.

Having the Family Support Workers on the ward really helped us through. Things like a cup of tea and a chat might seem small to someone who hasn't been through it, but it's so important when you are in this isolated and lonely bubble – they make you feel secure and safe when everything is so uncertain. They're great with Harper too, she loves arts and crafts, so they bring stickers and play dough and sit with her for a while which keeps her happy and entertained.

I've also had Candlelighters talking therapy, and I can't express how much it helped. Those early days were dark, and having a safe space to talk made all the difference.

As a family, we've loved attending Candlelighters events like the Family Fun Day. When your child is on treatment, chances to feel like a normal family are rare. Being able to enjoy that without financial stress was special. I spent the first year of Harper's treatment off work and going down to a one income household brought its own pressures.



We're nearly two years in, and our journey has been very up and down. We don't know how long it will last. Living with that uncertainty is tricky, it's a rollercoaster no one can prepare you for, and you can only truly understand when you're in it.

But it's brought us closer and showed us everything we can get through as a family. Most days Harper is stronger than we are, she is doing amazingly, and we just need to keep strong for her.

We have received so much support from Candlelighters, which wouldn't be possible if not for people fundraising and giving all they can.

You don't realise the impact of what that little bit of help can do until you're on the receiving end of it.”



Partnering with Candlelighters

can help your business grow.

Partnering with Candlelighters is a chance to make a real difference, not just in the lives of children like Harper, but within your own organisation too.

By standing with families affected by childhood cancer, your business can inspire employees, connect more deeply with customers, and be recognised for doing something that truly matters.

Whether you're looking to energise your team, grow your brand, or meet CSR goals, we're here to help you make it happen.

Our business partners have told us about the great benefits they've experienced from teaming up with us...



People power

80% felt their partnership helped team building and boosted staff morale.



Reputation and credibility

68% said that they gained positive PR & brand recognition.



Sustainability and social good

79% thought it helped them achieve their CSR goals.



Find out more about how a partnership with Candlelighters can unlock growth opportunities for your business.

"Giving back is in the foundations of our culture. We want to have a positive impact on society, and one of the ways we do this is through our partnership with Candlelighters. Candlelighters have been our chosen charity for over 11 years. In that time, we've raised £250k, which is an incredible achievement that we are hugely proud of.

It's been amazing to watch the total raised increase over the years and to clearly see the impact our fundraising has on the charity and the children and families they support. Our long-term partnership also means we can plan ahead; whether it's Pink It Up week, payroll donations, our 'Park Like a CEO' raffle, or sponsoring vital roles like the in-hospital Dinner Supervisor. Having this consistency helps us to forecast and organise other fundraising activities to ensure we reach our £25k annual target.

Just as importantly, our fundraising brings people together - we are always having fun. People from across our business get involved, often working with new people, which builds relationships and strengthens connections. Over the years, we've also built solid relationships with the Candlelighters team. They join us for our annual rounders game and really feel like an extension of our team."

Chloe Buchanan,
People and Culture Manager at Tieva



How we can work together

to support children with cancer.

There are so many ways your business can make a meaningful impact for children and families facing childhood cancer. Our dedicated corporate team will work closely with you to explore opportunities that both raise vital funds and support your business goals. From one-year partnerships to ongoing support, we'll tailor the approach to fit your organisation.

Here are just a few ways other businesses have worked with us...

Charity of the Year

Choose Candlelighters as your Charity of the Year and bring your team together to make a huge impact through events, fundraising, and volunteering.

If you need some extra fundraising inspiration, turn to page 8!

"We have truly enjoyed working with Candlelighters as our Charity of the Year. Their unwavering dedication to supporting children with cancer and their families resonates deeply with our values of making a positive impact in the community.

The Candlelighters team's boundless energy and enthusiasm have made every fundraiser and activity a joy to be part of. From tackling the Yorkshire Three Peaks to volunteering at their

magical Christmas party, each experience has been seamless, thanks to their organisation and communication. We are proud to have supported such an important cause and look forward to seeing the incredible difference they continue to make in the lives of children and families across Yorkshire."

Sarah Caswell at Clarion Solicitors, COTY 2023/25



Payroll giving

Give employees the chance to make regular donations directly from their salary. It's a simple, tax-efficient way to support Candlelighters.

Matched giving

Double the impact of your employees' fundraising by matching their total. It's a powerful way to show your support and boost morale.



Company foundations

If your company has a foundation or trust, nominating Candlelighters for support can help sustain and grow the vital services we provide.



Cause Related Marketing

Your business can donate part of the proceeds from sales to Candlelighters, creating a partnership that supports families and strengthens your brand at the same time.

Coffee Care in Skipton has brewed something truly special with their new Champ's Coffee, a branded blend created in support of Candlelighters. With 20% of all sales from this coffee going directly to the charity, it's a fantastic example of how businesses and charities can work together to make a meaningful impact.

"We hoped and prayed every day but, however dire, helpless, and hopeless all of this felt, one thing that was a ray of light throughout the journey was Candlelighters." - Amy, mum to Aaron

Pound on the bill

Add a small voluntary donation - often £1 or rounding up to the nearest pound - to each bill. Customers can easily opt out, but many choose to give when they know their donation will help children with cancer and their families.

"At Mowgli Leeds, having Candlelighters as our charity partner means a great deal to us, not just as a business, but as part of the local community. Our guests truly connect with the cause, especially knowing it supports families in the area. Over the past five years, we've raised an incredible £80,000 simply by adding a £1 donation to the bill. It's inspiring to see how such a small gesture can create such a meaningful impact. We're proud of what we've achieved and excited to continue growing that support year after year." **Charity Champion at Mowgli Leeds**



Sponsorship

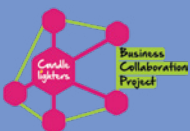
Sponsor our events and support Candlelighters while boosting your brand. Benefit from online promotion, logos on event materials and press mentions.

Charity partners Gleeds and RBC Brewin Dolphin have sponsored our Candlelighters Business Collaboration Projects events for a number of years.

Candlelighters Business Collaboration Project

The Candlelighters Business Collaboration Project (CBCP) hosts events throughout the year to connect and celebrate the businesses that support our work. At these events, there are opportunities to:

- Hear from our families and frontline teams about how your support is making a difference
- Collaborate and share fundraising events and ideas
- Network with like-minded businesses to build valuable connections
- Have fun, feel good and be inspired!



Keep up to date with upcoming events here



Kickstart your fundraising

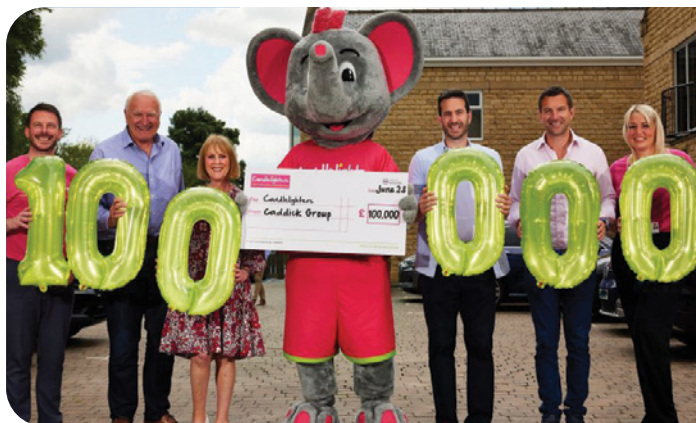
Fundraising is at the heart of every partnership with Candlelighters, and it can be as fun and simple as you like!

Here are just a few ways your business can raise funds for families...

- Bake sale
- Coffee morning
- Team quiz
- Abseil
- Golf day
- Collection tins
- Raffles
- Sports tournament
- Dress down day
- Charity ball
- Skydive
- Office sweepstake

Shout about your success!

Share your fundraising achievements on your social channels and with press to boost awareness, inspire even more support, and gain great PR for your business.



“Supporting the incredible work Candlelighters does for children and families affected by childhood cancer is a cause very close to our hearts. The £35,000 raised through our ‘Caddick Moment in Time’ ball is a testament to the generosity and spirit of our team, partners, and supporters. We are proud to stand alongside Candlelighters in making a meaningful difference.”

Kairen Brown
Head of CSR (The Caddick Group)

Pink It Up

Join businesses across Yorkshire to support children with cancer and their families during our flagship campaign in June – Pink It Up!



Taking part is easy and flexible - you choose how your workplace gets involved! From pink dress-down days to bake sales, office challenges, or a new and exciting idea.

“We had a pancake decorating competition, an easter egg competition, one of our exec team was gunged in pink goo for Pink It Up week, and a world baking day sale that got the whole office block together to raise money! Our main event was the Dragon Boat Festival which helped us to exceed our initial fundraising target of £4,000. We can’t wait to raise more money throughout the year!”

Hannah Taylor, FOD Mobility Group



Join our community

Become part of a passionate network of supporters dedicated to changing the lives of children with cancer and their families. As a member, you'll bring hope to children, provide vital support to families when they need it most, and help fund pioneering research to improve outcomes for the future.

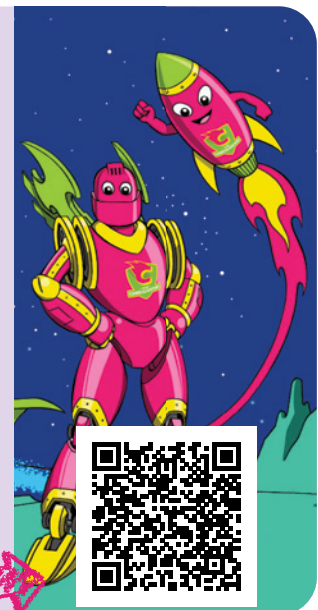
Club Candlelighters

By committing to a three-year pledge, you'll make a lasting difference to the lives of children with cancer and their families.

- **Guardians**
£5,000 per year for three years
Protecting services and ensuring no family faces childhood cancer alone.
- **Rockets**
£10,000 per year for three years
Accelerating our mission to develop and enhance the support we offer.
- **Transformers**
£25,000 per year for three years
Driving growth and transforming support for children and families.

Alongside the difference you'll make for children and families, your business will also enjoy a tailored package of benefits.

Scan the QR code to discover more.



Champ's Champions

Members of Champ's Champions pledge to fundraise or donate £2,000 or more in a year. This amazing support could fund a year's worth of activities and events in for children in hospital, bringing fun and reassurance.

"Albie has been in hospital numerous times, and often, a Candlelighters Family Support Worker was there to play with him and just make him feel happy and normal." - **Georgia, mum to Albie**

As well as making a lasting impact for children and families, your business will benefit from a bespoke package of opportunities.

Find out more via the QR code.



However you get involved, whether it's an idea from this pack or something else, we'll provide all the support you need.

Get in touch at info@candlelighters.org.uk or call 0113 887 8333



The difference you can make

£250



a sibling support group

Giving brothers and sisters a safe space to have fun and connect with others who understand.

£500



ten birthday boxes

So children spending a birthday in hospital can still celebrate their special day.

£1,100



a family holiday

Allowing a family to enjoy time away from treatment and create special memories.

“Our Candlelighters holiday to Center Parcs was absolutely the break we needed as a family. It takes so much out of you as a family going back and forth to the hospital for treatment, so being given the opportunity to get away for a few days - to just be a family, not think about cancer and let the kids just be kids - was amazing. It couldn't have been more welcomed.”

Hannah, Mum to Matilda



£6,000
one year of wishes
for children receiving
palliative care

To create an extra special memory for a child and their family, to treasure forever.

£12,750
running costs for The
Cottage for one year

Providing a home away from home, keeping families close during their child's cancer treatment.

£17,000
weekend support
for families

Keeping our family support centre open for families every Saturday, so they can access vital support and services.

“Candlelighters family support centre is the most wonderful environment when the endless corridors and sterile rooms, noise and tension of the hospital become frankly, all too much. The warmth of staff, the smiles, the giggles, the quiet rooms, therapy, and listening ears are perfectly balanced against helping with the reality of life at its worst.”

Emma, Mum to Rowan



£25,000

Vital front-line support from our Family Support Workers in hospital and at our family support centre.

£100,000
6 months of the Candlelighters
Supportive Care Research Centre

Funding research to prevent and reduce side effects, giving children the fullest life they can have during treatment.



Candlelighters Supportive Care Research Centre

Bringing together the world's leading experts, our research centre is pioneering improvements to care for children with cancer. Exploring new treatments and techniques will help reduce side effects, ease pain, and give young patients the fullest life possible during treatment.

“1 in 3 children who die with cancer die from the side effects of treatment. Supportive care isn't about a shiny new machine or a big cancer breakthrough... it's about improving interventions and addressing these side effects, so fewer children die.”

Professor Bob Phillips, Director of the Candlelighters Supportive Care Research Centre.



The legal bits

To help keep you and your team safe, please review the following guidance as you plan your fundraising.



Collections:

Planning a collection? You'll need a council license for public spaces, and collectors must be over 16. For private venues, get written permission from the owner or manager, and check if busy places like supermarkets or pubs need extra approval too.



Liability:

When you organise an event in aid of Candlelighters, you're responsible for covering costs and making sure it's safe for everyone involved. We can't accept liability for your event, so if it involves the public, please ensure you have the right insurance.



Cash Handling:

Try to have two unrelated people collect, count, and record it, and always do this in a safe place. Make sure to bank the money as soon as you can after your event.



Safeguarding Children:

If your event involves children, make sure there's plenty of adult supervision and always get permission from parents or guardians before taking or sharing any photos.



Raffles and Lotteries:

These can be a great, low-cost way to raise funds but there are rules you'll need to follow. Please check the Gambling Commission website to make sure your raffle, lottery or auction meets the legal requirements.



Cause Related Marketing:

If you're thinking of donating a percentage of your sales, or linking your product with Candlelighters, you'll need a signed agreement with us before you start. This helps protect your business, ensures we meet legal requirements, and ensures your support is promoted in the best way possible.

If there's anything you're unsure about or you have more questions, please email info@candlelighters.org.uk, or call 0113 887 8333

FAQs

Essential fundraising resources for your Candlelighters event


Can we have materials for our event? Yes! We have downloadable posters and graphics for your event on our website and please get in touch if you need extras like balloons or banners – we're here to help!

What logo should we use? You're welcome to use our 'Proud to support' logo on your fundraising and awareness-raising materials, which you can download from our website.


Scan for logos
and resources



How do we set up an online fundraising page? Setting up an online fundraising page is quick and easy, and means donations come straight to Candlelighters.

Scan the QR code to get started. 

How should we promote our fundraising? Sharing your fundraiser helps find supporters, raise awareness, and boost donations. Social media is the quickest way to reach people, but don't forget local press like radio and newspapers.

Make sure to tag us too!

 @CandlelightersTrust  @candlelightersyorkshire  @CandlelightersT  Candlelighters Trust

How should we pay in the money we raise? If you set up an online fundraising page to raise money, then you don't need to do anything else; the funds will come straight to us. If you have money to send in, here's how you can get it to us:



• **Bank transfer:** Use the details below – just remember to let us know and include your business name in the reference.

The Candlelighters Trust

Account: 11163578

Sort code: 05-00-20


• **Cheque:** If you'd like to pay via cheque, please make it payable to 'Candlelighters Trust' and post it to: **8 Woodhouse Square, Leeds, LS3 1AD.** Make sure you include a note with your details too, so we know who it's from!

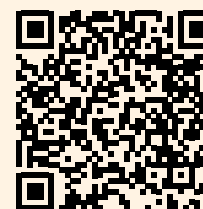
• **Cash:** You can pay any donations collected in cash into your bank account and make a card, cheque, or bank transfer payment to cover this.



giftaid it

What about Gift Aid? Don't forget to ask anyone supporting your fundraising to declare Gift Aid where appropriate. For every £1 they give, Candlelighters receives an extra 25p, at no extra cost to them. Just remember, Gift Aid only applies to individual donations (not ticket sales, raffles, auctions, or group collections). Donations directly from companies are not eligible for Gift Aid.

For more information, scan here. 



If you have any more questions, take a look at our FAQs page or contact the team for more information.

info@candlelighters.org.uk
0113 887 8333

Thank you!

It's thanks to amazing supporters like you that children facing childhood cancer don't have to face it alone.

“Candlelighters get people through the hardest of times; without them, many parents would break. Cancer literally tips your whole world upside down and Candlelighters holds your hand through it and supports families in ways that you don't even think of.” – Georgia, mum to Albie







Candlelighters

Supporting the families of children with cancer

[candlelighters.org.uk](https://www.candlelighters.org.uk)

info@candlelighters.org.uk
0113 887 8333

-  CandlelightersTrust
-  candlelightersyorkshire
-  CandlelightersT
-  Candlelighters Trust



Registered Charity No: 1045077